



Children's Social Care Performance & Quality Assurance Report

Quarter 3 (October - December 2020)

Scrutiny

Scrutiny

Quarter 3 2020/21 Performance Summary

Referral: 75.6% of referrals have been completed within 1 working day during Q3 2020/21, with a year to date total of 77.7%. Extensive work regarding referral enquiries has been required for some cases, resulting in completion taking longer than the statutory timescale. However, the additional work has been to the benefit of the child.

Re-Referrals: 19.7% of children have been re-referred to Children's Social Care within 12 months of a previous referral. This is above the internal target of 18%, but below our statistical neighbour (20.8%), regional (22.4%) and national average (22.6%) (LAIT 2020).

Early Help: 170 Early Help Assessments have been completed during Q3 2020/21.

Missing: Of the children and young people who are reported missing from home, 85.1% have been offered a return home interview within the 72-hour timescale. Where the co-ordinator cannot engage the child or young person, discussion takes place with parents, carers, teachers or social workers to offer insight around reducing the missing episodes. Of those who went missing 23.8% were a Child in Care.

Children & Families Assessments: 203 children had a single assessment carried out during Q3 2020/21, which is comparable to the 204 assessments completed during the same period last year. The rate of assessments was 237.8 per 10,000 of the population at the end of December 2020.

C&F Timeliness: Social workers completed 85.2% of the C&F assessments within timescale year to date. This is below our target of 90%, statistical neighbour (87.7%) and regional average (88.8%) and above national average (83.8%) as recorded for 2020 in the LAIT.

Section 47 enquiries: 44 section 47 enquiries were started during Q3 2019/20 involving 76 children, 2 of which were subject to a Child Protection plan (CP) at the time of the enquiry.

Child Protection Conference Timeliness: Year to date 92.5% of Initial Child Protection Conferences (ICPC) were held within 15 working days from the strategy meeting / section 47 being initiated, excluding transfer-in conferences, against our target of 95%. Darlington's performance remains higher than our statistical neighbour (80.8%), regional (83.1%) and national average (77.6%) (LAIT 2020).

Child Protection Plans: 88 children were subject to a Child Protection plan (CP) as at the end of December 2020. This is slightly below the 91 children who were subject to CP at the end of December 2019. Darlington currently has a rate of 39.2 per 10,000 population for children subject to a CPP which is lower than the regional average (70.0), statistical neighbour (53.9) and the national average (42.8) as reported in the 2020 LAIT.

100.0% of CP cases were allocated to a social worker and all the CP reviews were carried out in timescale. During Q3 2020/21 there were no children ceasing CP who had been subject to the plan for 2 or more years. At the end of December 2020, the percentage of children becoming subject to a CP plan for a second or subsequent time within 2 years of the previous plan ending was 8.3%, above the 6% target.

Child Protection Statutory visits: 85.8% of children received a statutory Child Protection (CP) visit in Q3 2020/21 within 10 working days, this is below target of 90% but an increase on the 77.7% that was completed in this timescale in Q3 2019/20.

Children in Care: 284 children are currently in care as at December 2020, which is a slight increase on the number of children (280) that were in care as at December 2019. During Q3 2020/21 a total of 13 children came into the care of the Local Authority, which is lower than in Q3 2019/20 (18). During Q3 2020/21, 31 children ceased to be in care. This demonstrates the curve in respect of the number of CiC is moving in the right direction.

Children in Care Reviews: 100.0% of Children in Care (CiC) were allocated to a qualified social worker. All reviews, except for 1, have been completed within required timescales during Q3 2020/21.

Statutory visits of Children in Care: During Q3 2020/21, 93.9% of statutory visits for Children in Care (CiC) were completed in timescale, this is an improvement compared to Q3 2019/20 when there were 89.7% visits completed in timescale. Year to date 93.4% of CiC visits have been completed in timescale which is above the target of 90%.

Children in Care Placements: 6.7% of Children in Care (CiC), as at December 2020, have had 3 or more placements within the previous 12 months. This is positively below the internal target (10%), national (10%), statistical neighbour (9.9%) and regional averages (10%) as recorded in the LAIT 2020, and below the 10.7% as at December 2019.

76.1% of our Children in Care aged under 16 (who have been looked after for at least 2.5 years) have been in their current placement continuously for at least 2 years. This is a higher percentage compared with December 2019 (72.7%) and is positively above the 68% target.

7.4% of our Children in Care have been placed 20 or more miles away from home as at December 2020, which is a positive reduction when compared to December 2019 (10.3%) and below internal target (10%). This relates to young people who have been placed in residential care due to their disability / placed with family / or placed for adoption, and this provision was not available within 20 miles.

Initial Health Assessments: 100.0% of the children, newly into care, were seen by CDDFT within 20 working days for an initial health assessment during Q3 2020/21.

Health and Dental Reviews: 91.7% of children due a review health assessment by December 2020 have had one completed. This percentage has increased slightly compared with 90.4% completed reviews at the end of December 2019.

As a result of dental surgery closures during lockdown, 29.5% of Children in Care, that were due a dental check assessment has had one completed.

The percentage of children who have refused their medical checks has continued to decrease, with only 4.5% refusing their health review and 3.2% refusing their dental review. Although they are refusing, they are continually reminded of the benefits of having a check-up and encouraged to take part.

Care Leavers: 100.0% of care leavers were in suitable accommodation at the end of Q3 2020/21.

The percentage of care leavers who were Not in Education, Employment or Training (NEET) continues to be positively below the target set of 30% at 26.5% at the end of Q3 2020/21.

REFERRALS - TIMELINESS

DEFINITION Percentage of referrals completed within 1 working day and over 3 working days. Referrals completed within 1 working day indicates that decisions regarding the services required are made in a timely manner to minimise drift and delay and to ensure that children are safe.

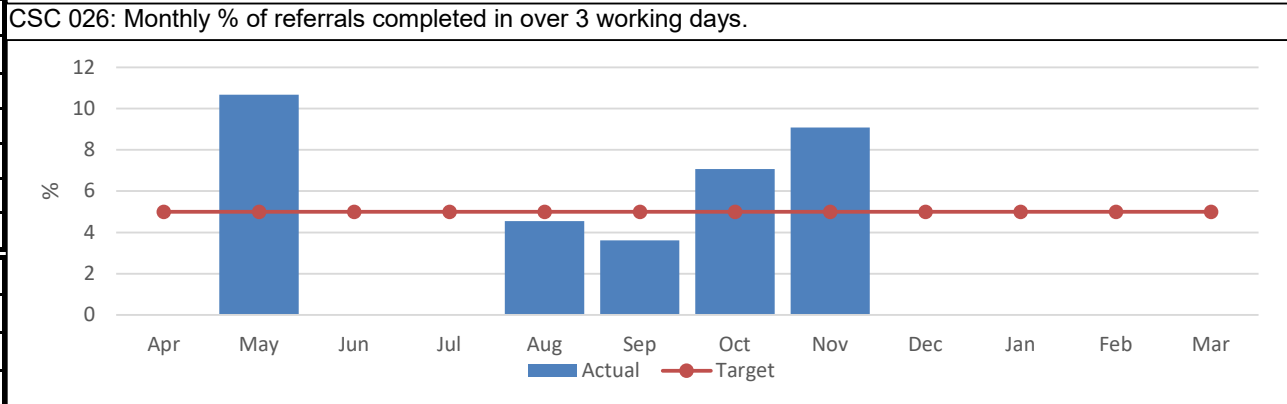
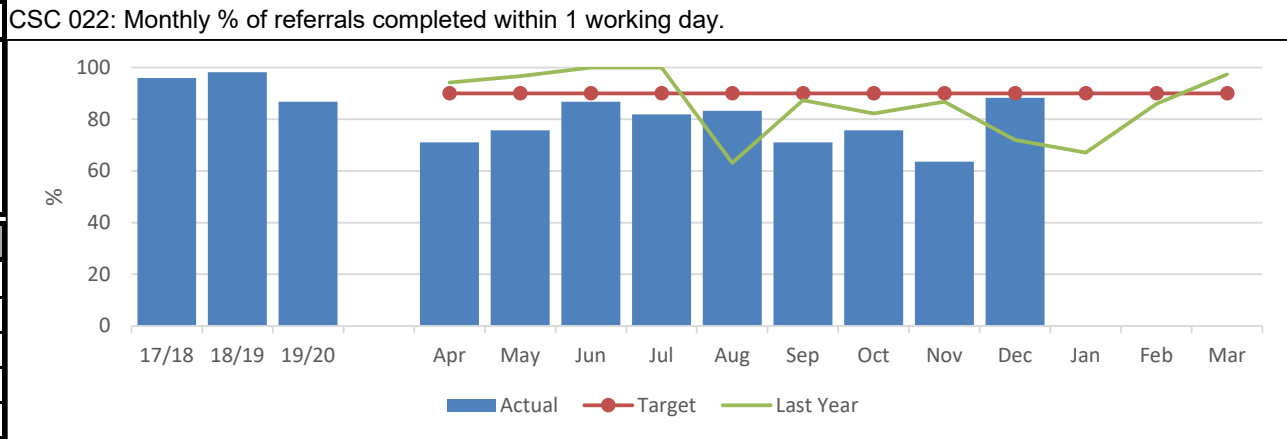
PERFORMANCE ANALYSIS

75.6% of the referrals completed within timescale during Q3 2020/21.

We have experienced a rise in referrals taking longer than 3 working days to complete, currently just below the 5% target with 4.2%. However, consideration is needed regarding the number of siblings in these families. 3 families with 3 children during Q3 2019/20 compared to 4 families with 12 children during Q3 2020/21 had their referral outcomed over timescale resulting in the increased percentage out of time.

CSC 022	CSC 026
Monthly % of referrals completed within 1 working day.	Monthly % of referrals completed in over 3 working days.

IN MONTH PERFORMANCE	Target	90%	5%
	Apr-20	71.1	0.0
	May-20	75.7	10.7
	Jun-20	86.8	0.0
	Jul-20	81.8	0.0
	Aug-20	83.3	4.6
	Sep-20	71.1	3.6
	Oct-20	75.8	7.1
	Nov-20	63.6	9.1
	Dec-20	88.2	0.0
Jan-21			
Feb-21			
Mar-21			
ANNUAL TREND	2017/18	96.0	1.8
	2018/19	98.2	0.0
	2019/20	86.8	1.6
	2020/21 YTD	77.7	4.2



REFERRALS - RE-REFERRALS

DEFINITION
 Percentage of re-referrals that are received within 12 months of a previous referral (based on referral start dates)
 A re-referral to Children's Social Care could be an indication that the previous referral was inappropriately closed down without addressing the initial concerns or issues.

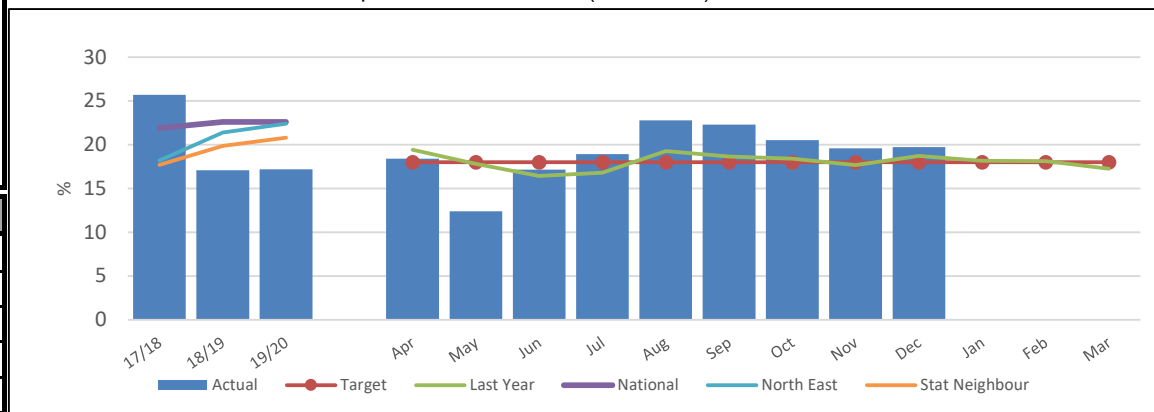
PERFORMANCE ANALYSIS
 30 re-referrals from 12 families have been made during Q3 2020/21. This has resulted in 19.7% of our referrals year to date being repeated within 12 months. This is above the internal target of 18%, but below our statistical neighbour (20.8%), regional (22.4%) and national average (22.6%) (LAIT 2020). The number of children being re-referred is also below the number in Q3 2019/20, which saw 43 children from 23 families being re-referred.

CSC 034	CSC 032	% of referrals that are re-referrals (monthly)
Monthly number of re-referrals that are repeat within 12 months	% re-referrals that are repeat within 12 months (cumulative)	

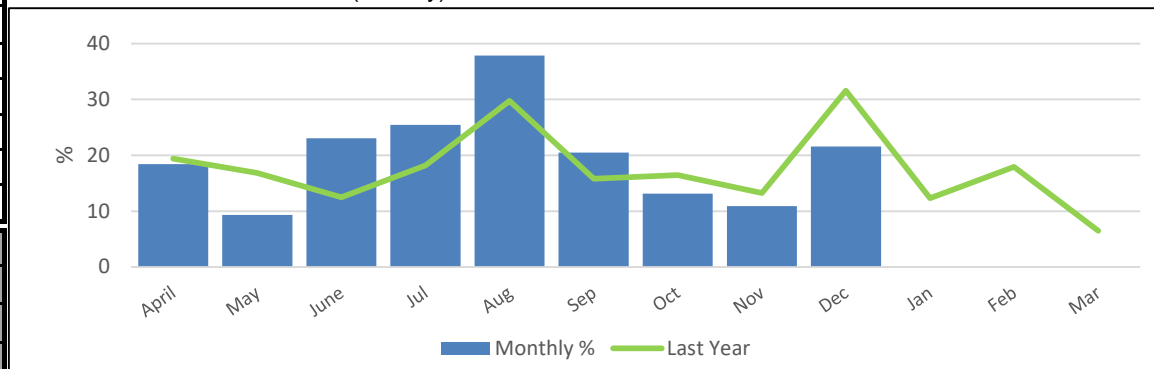
IN MONTH PERFORMANCE	Target		18%	
	Apr-20	7	18.4	18.4
	May-20	7	12.4	9.3
	Jun-20	21	17.2	23.1
	Jul-20	14	18.9	25.5
	Aug-20	25	22.8	37.9
	Sep-20	17	22.3	20.5
	Oct-20	13	20.5	13.1
	Nov-20	6	19.6	10.9
	Dec-20	11	19.7	21.6
	Jan-21			
	Feb-21			
Mar-21				

ANNUAL TREND	2017/18	247	25.7	
	2018/19	205	17.1	
	2019/20	171	17.2	
	2020/21 YTD	121	19.7	

CSC 032: % re-referrals that are repeat within 12 months (cumulative)



% of referrals that are re-referrals (monthly)



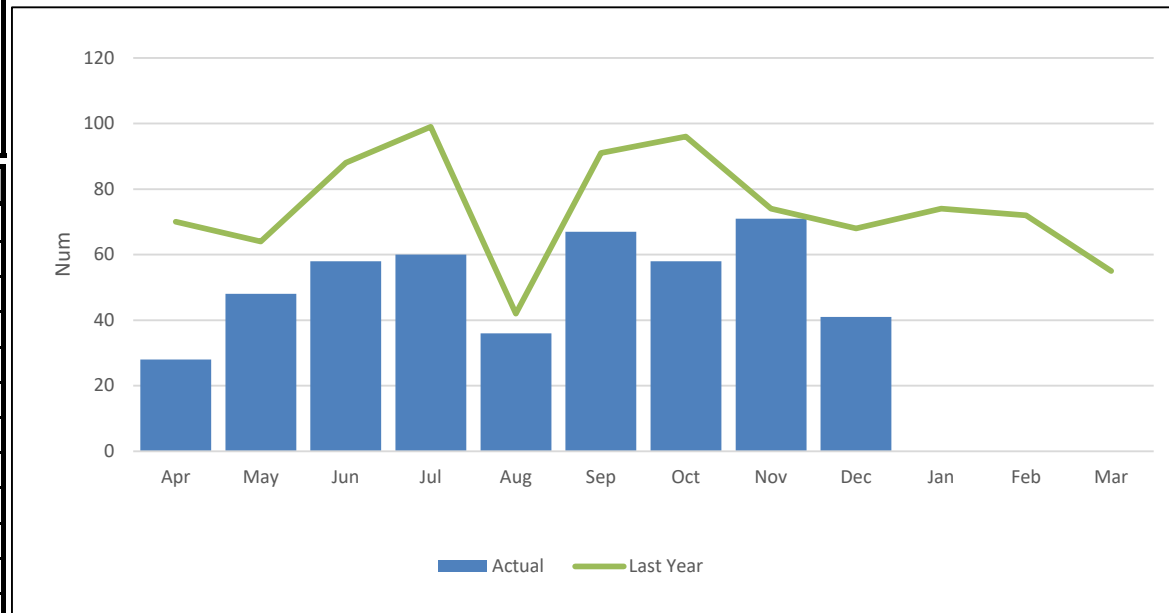
EARLY HELP ASSESSMENTS - STARTED

DEFINITION	The number of individual Early Help Assessments (EHA) started in month and year to date, including those initiated by external agencies. The start date of the EHA is taken from the form created date in Liquid Logic and the start date of the external EHA is taken from the contact date when the agency informed us of the EHA.
-------------------	--

PERFORMANCE ANALYSIS	170 Early Help Assessments (EHA) were started during Q3 2020/21.
-----------------------------	--

CSC 002
Total number of individual EHA's started in month (inc. external)

CSC 002: Total number of individual EHA's started in month (inc. external)



IN MONTH PERFORMANCE	Target	
	Apr-20	28
	May-20	48
	Jun-20	58
	Jul-20	60
	Aug-20	36
	Sep-20	67
	Oct-20	58
	Nov-20	71
	Dec-20	41
	Jan-21	
	Feb-21	
	Mar-21	

ANNUAL TREND	2017/18	877
	2018/19	869
	2019/20	893
	2020/21 YTD	467

MISSING EPISODES

DEFINITION	The number of episodes of children going missing in Darlington, including Children in Care, Children in Care with another authority and children who are not currently open to Social Care. The percentage of Return Home Interviews (RHI) completed within 72 hours and the level of engagement by the child.
-------------------	--

PERFORMANCE ANALYSIS	16 Children in Care (CiC) were reported missing in Q3 2020/21. Where children are looked after by other authorities but cared for in Darlington, the ERASE Team have been alerted and provided with relevant information to ensure that the young people have been appropriately placed.
-----------------------------	--

CSC 246
Number of missing relating to Children in Care with DBC

IN MONTH PERFORMANCE		Ep.	Child.
	Apr-20	9	5
	May-20	12	8
	Jun-20	6	6
	Jul-20	10	6
	Aug-20	6	5
	Sep-20	4	4
	Oct-20	6	3
	Nov-20	11	10
	Dec-20	12	8
	Jan-21		
	Feb-21		
Mar-21			

ANNUAL TREND child counted once	2018/19	199	36
	2019/20	129	24
	2020/21 YTD	76	26

ASSESSMENTS

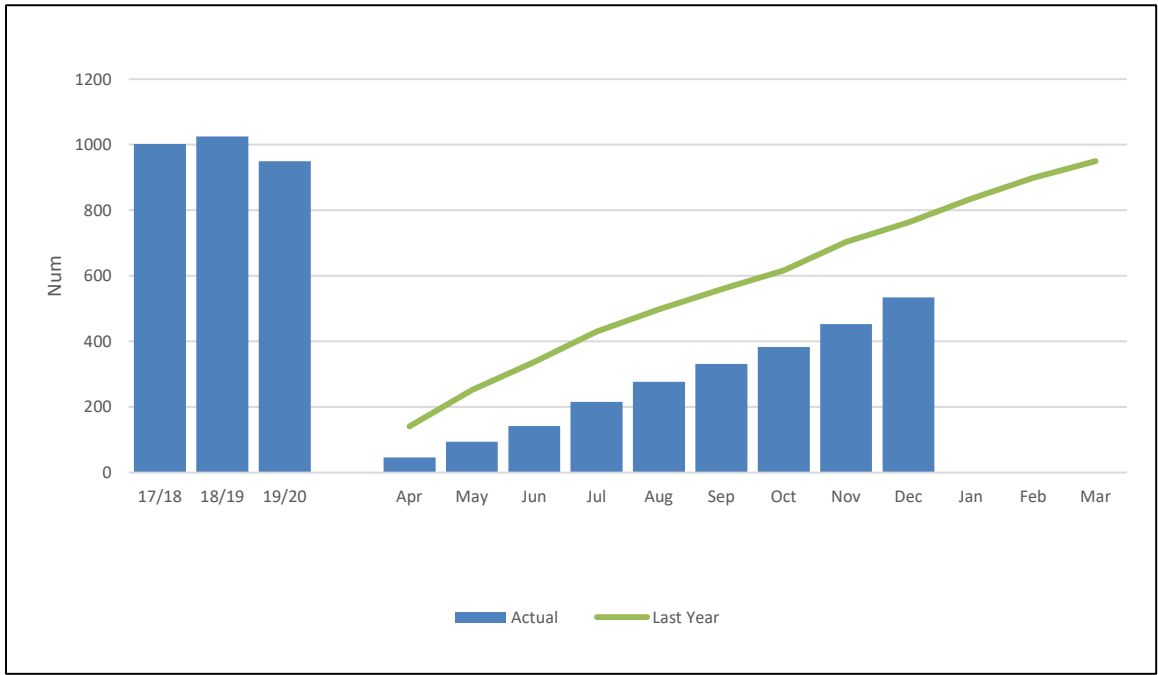
DEFINITION Monthly and cumulative number of Children & Families assessments completed.

PERFORMANCE ANALYSIS 203 C&F assessments have been completed in Q3 2020/21.

CSC 036
Number of children & families assessments completed year to date

CSC 036: Number of children & families assessments completed year to date

IN MONTH PERFORMANCE	Apr-20	46
	May-20	94
	Jun-20	142
	Jul-20	216
	Aug-20	277
	Sep-20	331
	Oct-20	383
	Nov-20	453
	Dec-20	534
	Jan-21	
	Feb-21	
	Mar-21	



ANNUAL TREND	2017/18	1,002
	2018/19	1,025
	2019/20	950
	2020/21 YTD	534

ASSESSMENTS - TIMELINESS

DEFINITION	<p>Of those assessments completed in a period, the percentage completed within 45 working days. Day zero is the first working day on or after the start date of the referral, or strategy discussion decided to initiate S47 enquiries, or where new information indicates that an assessment should be undertaken. The end date is the first working day on or after the recorded date the Team Manager closes the single assessment.</p> <p>A process indicator as a proxy measure for improved child safety and how quickly services can respond when a child is thought to be at risk of serious harm. Local authorities should investigate and address concerns in a timely and efficient way.</p>
-------------------	---

PERFORMANCE ANALYSIS	<p>As at December 2020, 85.2% (455 / 534) of the C&F assessments were completed within 45 days.</p> <p>This is below our target of 90%, statistical neighbour (87.7%) and regional average (88.8%) and above national average (83.8%) as recorded for 2020 in the LAIT.</p>
-----------------------------	---

CSC 038
% C&F Assessments completed within 45 working days (Year to date)

IN MONTH PERFORMANCE	Target	90%
	Apr-20	71.7
	May-20	62.8
	Jun-20	75.4
	Jul-20	77.8
	Aug-20	81.6
	Sep-20	80.4
	Oct-20	81.5
	Nov-20	83.7
	Dec-20	85.2
	Jan-21	
	Feb-21	
Mar-21		

ANNUAL TREND	2017/18	93.3
	2018/19	81.5
	2019/20	88.7
	2020/21 YTD	85.2

SECTION 47 - STARTED

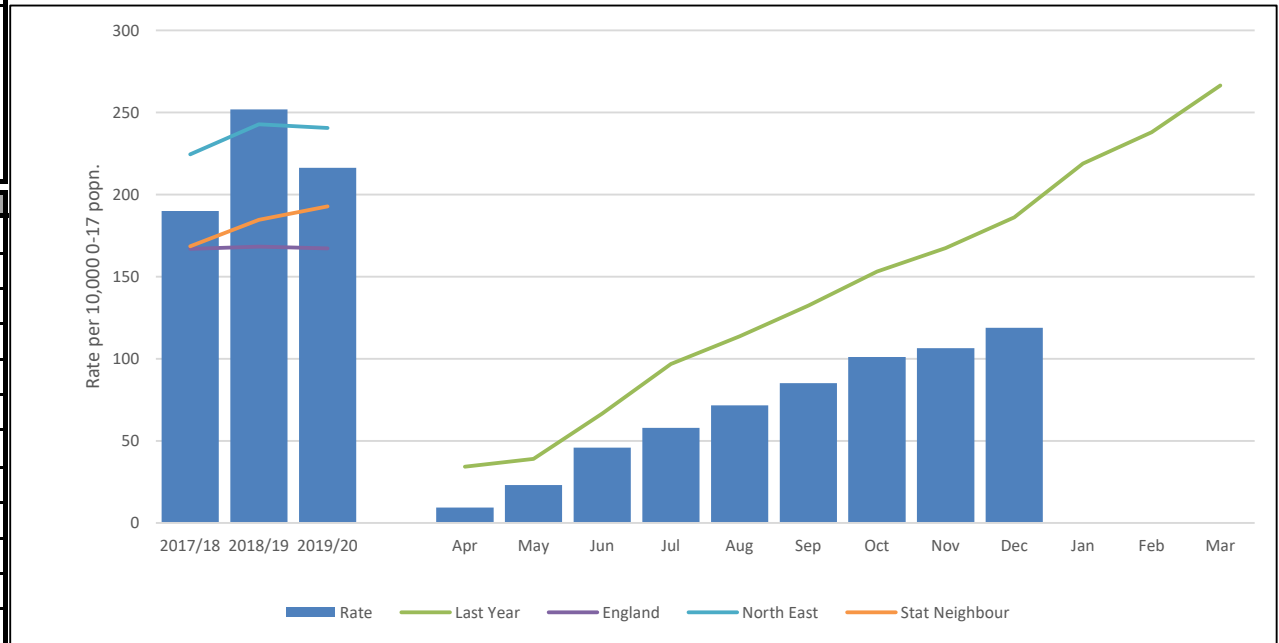
DEFINITION	Number of children who have had a section 47 enquiries started monthly and year to date and the actual number of enquires started.
-------------------	--

PERFORMANCE ANALYSIS	44 section 47 enquires were started during Q3 2020/21 involving 76 children, 2 of which were subject to a Child Protection plan (CP) at the time of the enquiry.
-----------------------------	--

CSC 166	CSC 164
All children who had a section 47 enquires started in the month	Rate of section 47 enquiries started per 10,000 of the 0-17 population (Cumulative)

Rate of section 47 enquiries started per 10,000 of the 0-17 population (inc. children already on CPP)

IN MONTH PERFORMANCE			
	Apr-20	21	9.4
	May-20	31	23.2
	Jun-20	51	45.9
	Jul-20	27	57.9
	Aug-20	31	71.7
	Sep-20	30	85.1
	Oct-20	36	101.1
	Nov-20	12	106.4
	Dec-20	28	118.9
	Jan-21		
	Feb-21		
	Mar-21		



ANNUAL TREND	2017/18	426	190.0
	2018/19	646	251.8
	2019/20	484	216.2
	2020/21	267	118.9

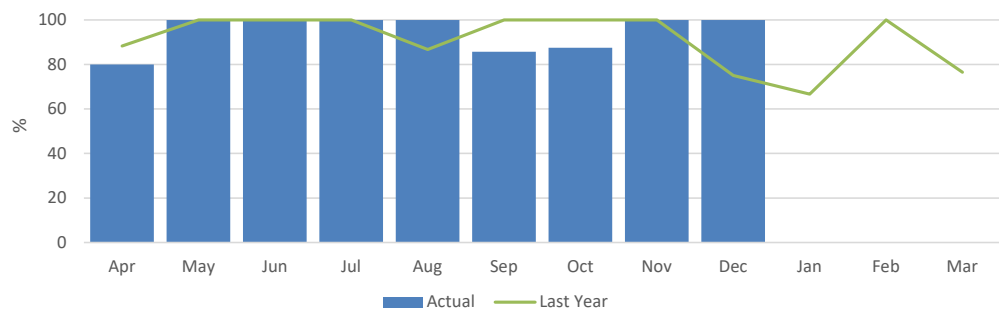
INITIAL CHILD PROTECTION CONFERENCES - TIMELINESS

DEFINITION Of those ICPC's held within the period (excluding transfer ins), the percentage held within 15 working days of the S47 enquiry. Provides an indication of how quickly the safety of children who are judged to be continuing to, or likely to suffer significant harm is being considered by a multi-agency meeting.

PERFORMANCE ANALYSIS Of the 22 children (who were not transferred in), 21 had their Initial Child Protection Conferences (ICPC) within timescale (95.5%) during Q3 2020/21. 1 child did not receive their conference in time during October 2020 and went on to have a CP plan as the outcome.
Although the delayed conferences have taken us slightly below our target of 95%, our performance remains higher than our statistical neighbour (80.8%), regional (83.1%) and national average (77.6%) (LAIT 2020).

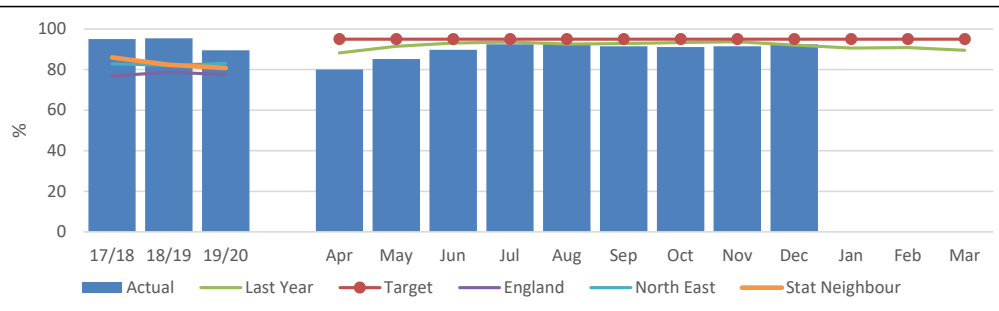
CSC 178	CSC 176
Monthly % of cases recorded in the Safeguarding Unit workbook where Child Protection strategy meeting / S47 start to initial child protection conference (ICPC) are within 15 days (CPP). Excludes transfer-in conferences.	% of cases where the initial child protection conference (ICPC) was within 15 days of the initiating strategy discussion / S47 start recorded in the Safeguarding Unit workbook (CPP). This EXCLUDES transfer-in conferences. Year to Date

CSC 178: Monthly % of cases recorded in the Safeguarding Unit workbook where Child Protection strategy meeting / S47 start to initial child protection conference (ICPC) are within 15 days (CPP). Excludes transfer-in conferences.



IN MONTH PERFORMANCE	Target	CSC 178	CSC 176
		100	95
Apr-20		80.0	80.0
May-20		100.0	85.2
Jun-20		100.0	89.7
Jul-20		100.0	92.5
Aug-20		100.0	93.0
Sep-20		85.7	91.6
Oct-20		87.5	91.1
Nov-20		100.0	91.5
Dec-20		100.0	92.5
Jan-21			
Feb-21			
Mar-21			

CSC 176: % of cases where the initial child protection conference (ICPC) was within 15 days of the initiating strategy discussion / S47 start recorded in the Safeguarding Unit workbook (CPP). This EXCLUDES transfer-in conferences. Year to Date



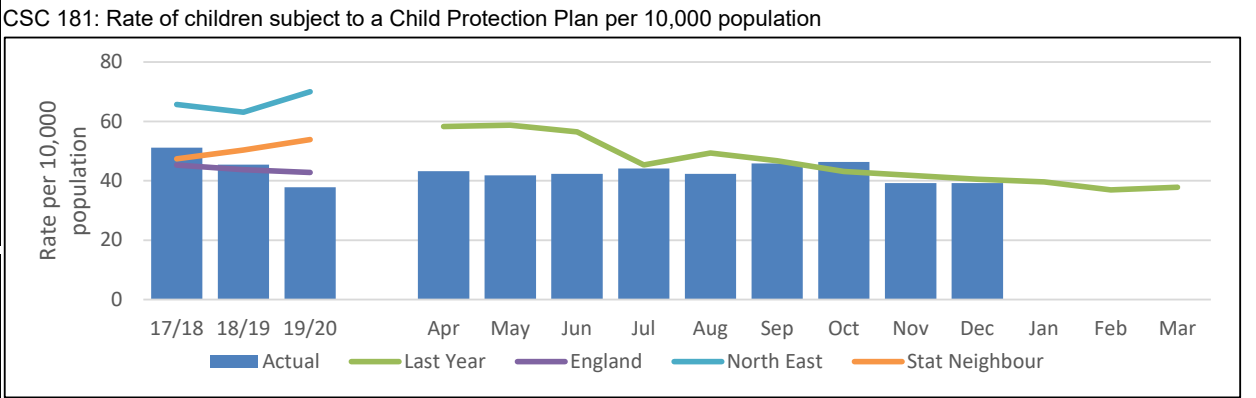
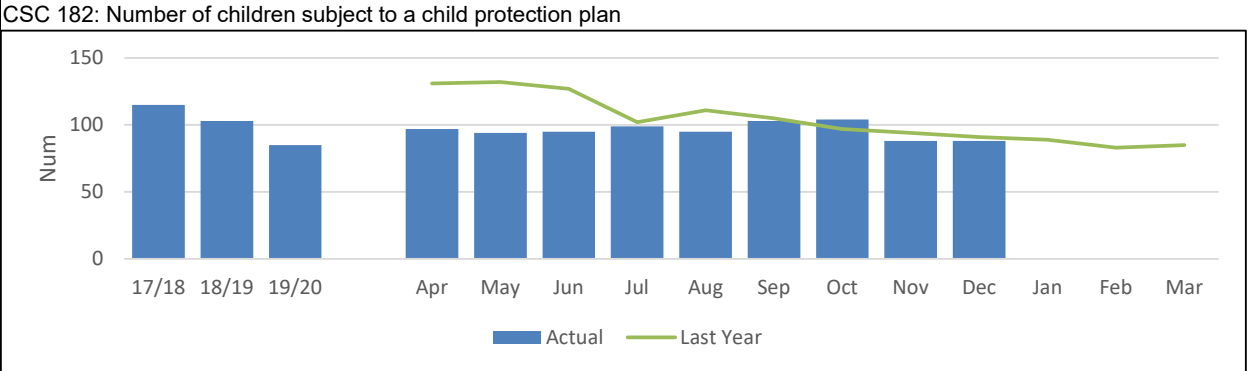
ANNUAL TREND	2017/18	CSC 178	CSC 176
	2018/19	95.4	95.4
	2019/20	89.5	89.5
	2020/21	100.0	92.5

CHILD PROTECTION

DEFINITION	Number of children subject to a Child Protection plan at the end of the month.
-------------------	--

PERFORMANCE ANALYSIS	88 children were subject to a Child Protection plan (CP) as at the end of December 2020. This is comparable to the 91 children who were subject to CP at the end of December 2019. Darlington currently has a 39.2 rate per 10,000 population for children subject to a CPP which is lower than the regional average (70.0), statistical neighbour (53.9) and the national average (42.8) as reported in the 2020 LAIT.
-----------------------------	---

	CSC 182	CSC 181	
	Number of children subject to a child protection plan	Rate of children subject to a Child Protection Plan per 10,000 population	
IN MONTH PERFORMANCE	Apr-20	97	43.2
	May-20	94	41.9
	Jun-20	95	42.3
	Jul-20	99	44.1
	Aug-20	95	42.3
	Sep-20	103	45.9
	Oct-20	104	46.3
	Nov-20	88	39.2
	Dec-20	88	39.2
	Jan-21		
	Feb-21		
	Mar-21		
ANNUAL TREND	2017/18	115	50.8
	2018/19	103	45.7
	2019/20	85	37.8
	2020/21 YTD	88	39.2



CHILD PROTECTION - ALLOCATION & REVIEWS

DEFINITION

The percentage of children subject to a Child Protection Plan at the end of the month and who at that date had had a Plan continuously for at least the previous 3 months, whose case was reviewed within the required timescales.

Reviews are a key element in delivering Child Protection Plans and effective reviews should ensure the provision of good quality interventions. This indicator is a proxy for the measurement of effectiveness of the interventions provided to children subject to a Child Protection Plan. "Working Together to Safeguard Children" guidance requires that the first review should be within 3 months of the initial child protection conference and thereafter at intervals of no more than 6 months.

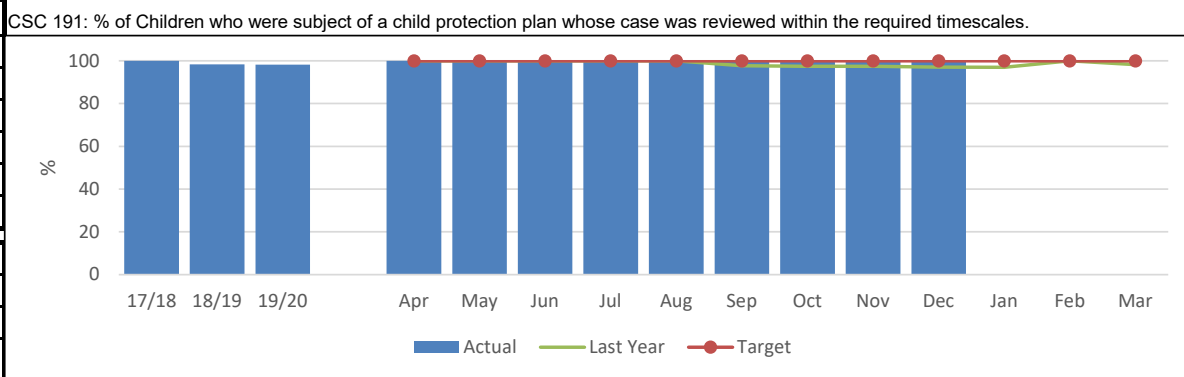
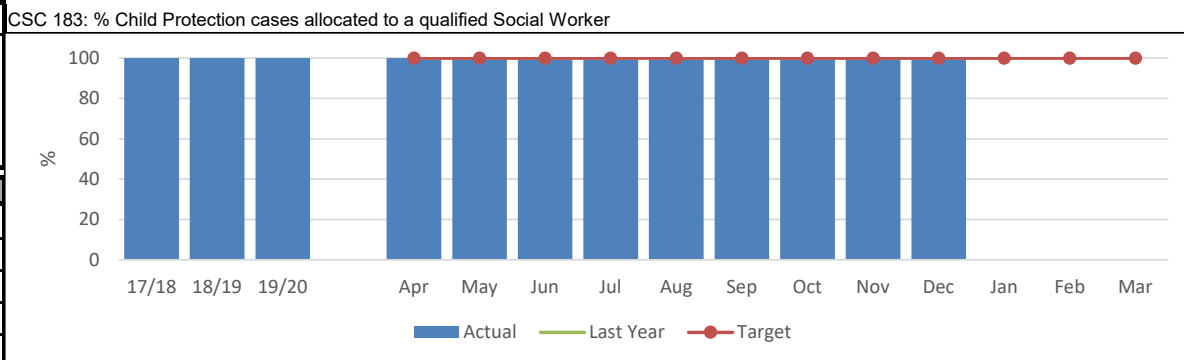
PERFORMANCE ANALYSIS

100% of Child Protection Cases were allocated to a qualified social worker.

100% of Child Protection reviews have been completed within the required timescales.

Performance remains higher than statistical neighbours (89.9%), regional (92.9%) and national averages (91.5%) as reported in the 2020 LAIT.

		CSC 183	CSC 191
		% Child Protection cases allocated to a qualified Social Worker	% of Children who were subject of a child protection plan whose case was reviewed within the required timescales.
IN MONTH PERFORMANCE	Target	100	100
	Apr-20	100.0	100.0
	May-20	100.0	100.0
	Jun-20	100.0	100.0
	Jul-20	100.0	100.0
	Aug-20	100.0	100.0
	Sep-20	100.0	100.0
	Oct-20	100.0	100.0
	Nov-20	100.0	100.0
	Dec-20	100.0	100.0
	Jan-21		
	Feb-21		
ANNUAL TREND	2017/18	100.0	100.0
	2018/19	100.0	98.4
	2019/20	100.0	98.2
	2020/21 YTD	100.0	100.0

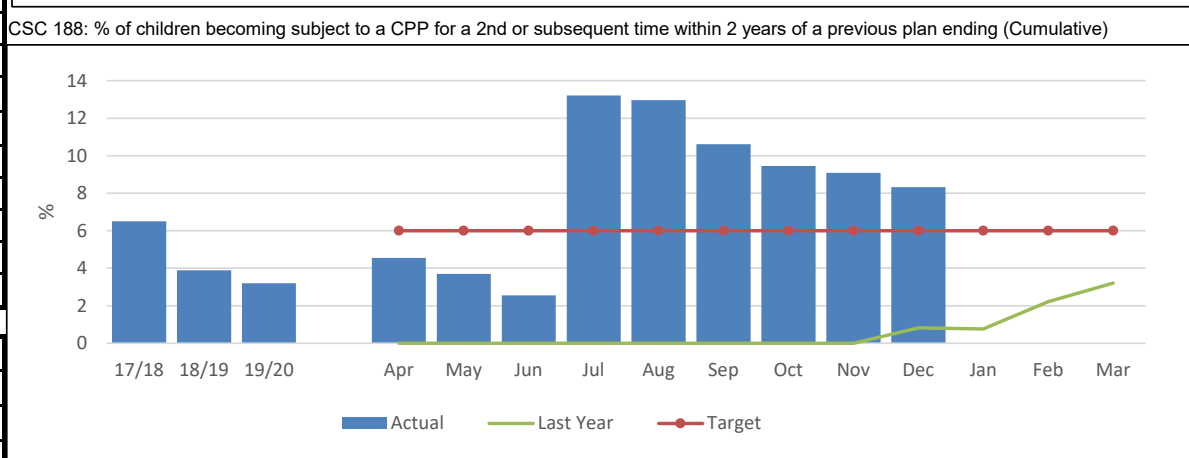
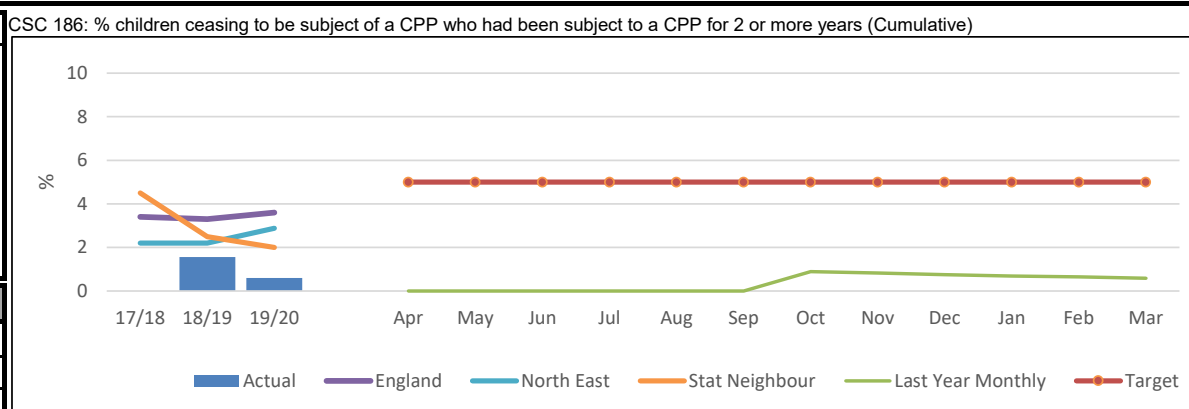


CHILD PROTECTION - TIME PERIODS

DEFINITION
 Percentage of children ceasing to be subject to a Child Protection Plan who had been subject to a Plan for 2 or more years, and percentage of children becoming subject to a Child Protection Plan for the 2nd or subsequent time within a) 2 years of a previous plan, and b) with a previous plan at any point.
 These indicators reflect the underlying principle that professionals should be working towards specified outcomes which, if implemented effectively, should lead to all children not needing to be the subject of a Child Protection Plan within a maximum of two years, or becoming subject of a Child Protection Plan for a second or subsequent time.

PERFORMANCE ANALYSIS
 At the end of December 2020, 8.3% became subject to a CP plan for a second or subsequent time within 2 years of the previous plan ending.
 Year to date no child has ceased to be subject to a CP plan who had been subject to the plan for 2 or more years and we continue to remain below our targets of 5%.

	CSC 186	CSC 188	
	% children ceasing to be subject of a CPP who had been subject to a CPP for 2 or more years (Cumulative)	% of children becoming subject to a CPP for a 2nd or subsequent time within 2 years of a previous plan ending (Cumulative)	
	Target	5%	
	5%	6%	
IN MONTH PERFORMANCE	Apr-20	0.0	4.6
	May-20	0.0	3.7
	Jun-20	0.0	2.6
	Jul-20	0.0	13.2
	Aug-20	0.0	13.0
	Sep-20	0.0	10.6
	Oct-20	0.0	9.5
	Nov-20	0.0	9.1
	Dec-20	0.0	8.3
	Jan-21		
	Feb-21		
	Mar-21		
ANNUAL TREND	2017/18	0.0	6.5
	2018/19	1.6	3.9
	2019/20	0.6	3.2
	2020/21	0.0	8.3



CHILD PROTECTION - STATUTORY VISITS

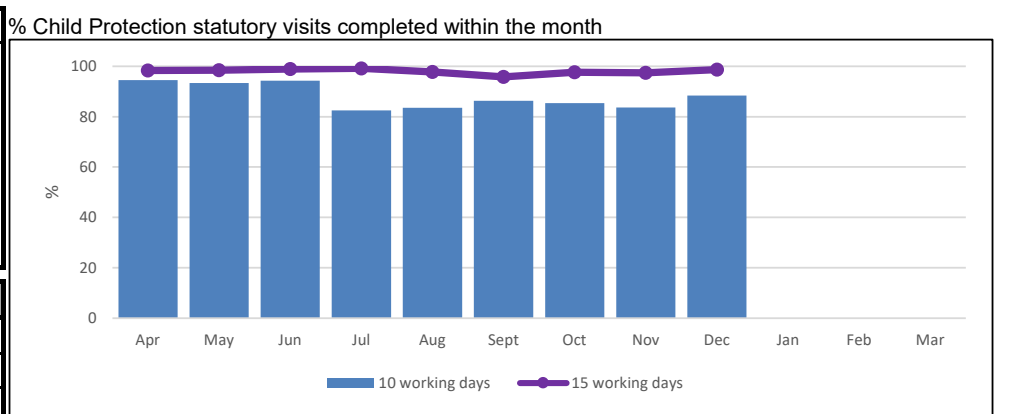
DEFINITION Percentage of children subject to a Child Protection Plan who had all statutory visits carried out within timescales and percentage of Child Protection statutory visits completed within timescale monthly and year to date.

PERFORMANCE ANALYSIS

85.8% of Child Protection statutory visits were completed within 10 working days in Q3 2020/21. This is with 10.2% more visits taking place than in Q3 2019/20 and an increase on the 77.7% that were completed in this timescale.

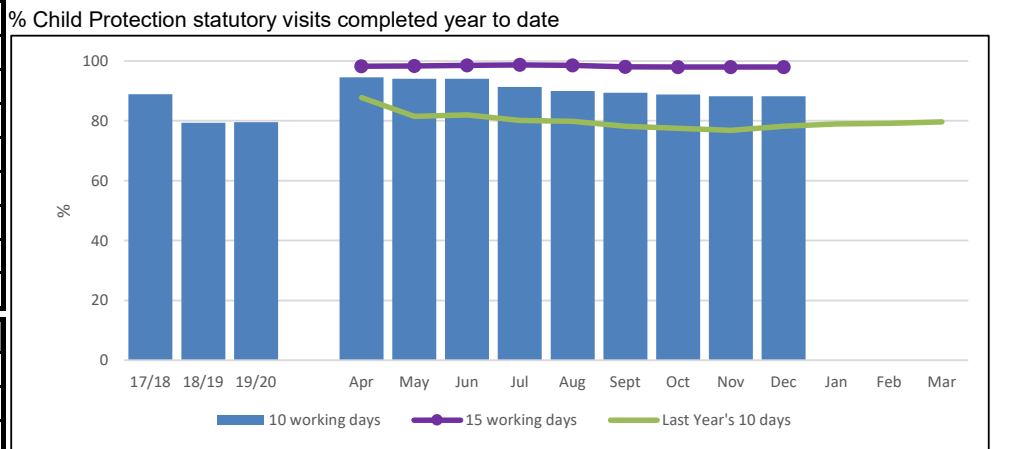
98.0% of the visits were completed within 15 working days in Q3 2020/21. This shows that 85.6% of the missed visits, were completed within 5 days of being out of timescale.

CSC 252a		CSC 252b	
% Child Protection statutory visits completed within 10 working days within the month	% Child Protection statutory visits completed within 15 working days within the month	% Child Protection statutory visits completed within 10 working days year to date (cumulative)	% Child Protection statutory visits completed within 15 working days year to date (cumulative)



IN MONTH PERFORMANCE

Target	90	90	90	90
Apr-20	94.6	98.3	94.6	98.3
May-20	93.4	98.4	94.0	98.4
Jun-20	94.3	98.9	94.1	98.5
Jul-20	82.5	99.2	91.3	98.7
Aug-20	83.6	97.8	90.0	98.5
Sep-20	86.3	95.8	89.4	98.1
Oct-20	85.3	97.7	88.8	98.0
Nov-20	83.7	97.4	88.2	98.0
Dec-20	88.4	98.7	88.2	98.0
Jan-21				
Feb-21				
Mar-21				



ANNUAL TREND

2017/18	88.9		88.9	
2018/19	79.3	95.7	79.3	95.7
2019/20	79.6	92.0	79.6	93.8
2020/21	88.4	98.7	88.2	98.0

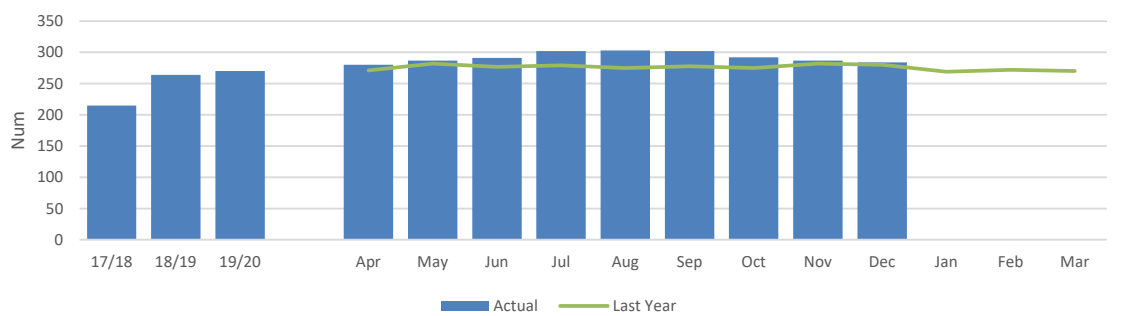
CHILDREN IN CARE

DEFINITION	Number of Children in Care at the end of each month.
-------------------	--

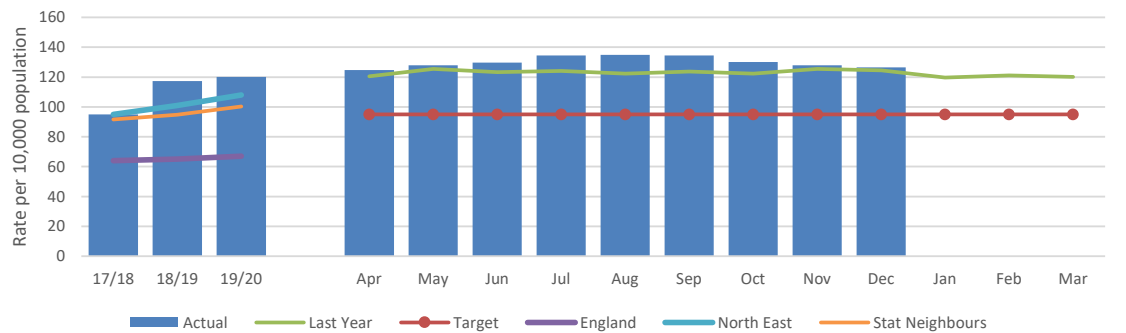
PERFORMANCE ANALYSIS	<p>284 children are currently in care as at December 2020 which is comparable to the number of children (280) that were in care as at December 2019.</p> <p>The rate of Children in Care (CiC) per 10,000 population is currently 126.5 which is higher than our statistical neighbours (100.3), regional (108.0) and national average (67.0) (LAIT 2020).</p>
-----------------------------	--

IN MONTH PERFORMANCE	Target	CSC 201	CSC 200	
			Total number of Children in Care	Rate of Children in Care Per 10,000 population
			95	
	Apr-20	280	124.7	
	May-20	287	127.8	
	Jun-20	291	129.6	
	Jul-20	302	134.5	
	Aug-20	303	134.9	
	Sep-20	302	134.5	
	Oct-20	292	130.0	
	Nov-20	287	127.8	
	Dec-20	284	126.5	
Jan-21				
Feb-21				
Mar-21				

CSC 201: Total number of Children in Care



CSC 200: Rate of Children in Care Per 10,000 population



CHILDREN IN CARE - ALLOCATION & REVIEWS

DEFINITION

The percentage of Children in Care cases which should have been reviewed during the year ending 31 March that were reviewed on time during the year and the percentage of Children in Care cases that were allocated to a qualified Social Worker at the end of the month.

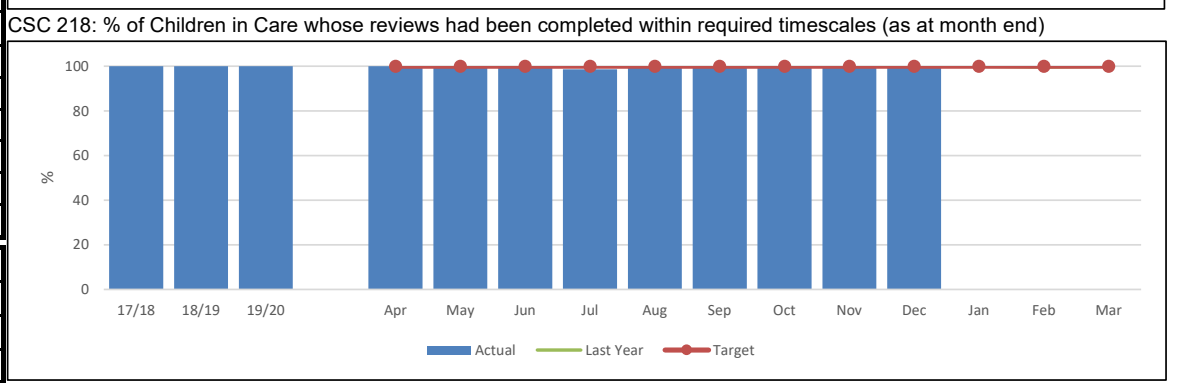
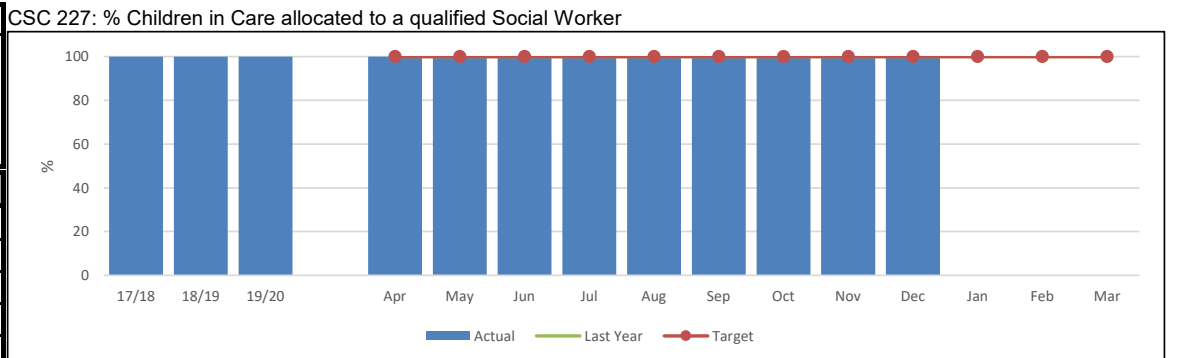
To improve compliance with local authorities' legal requirements under the Review of Children's cases Regulations 1991. The purpose of the review is to consider the plan for the child's welfare, to monitor the progress of the plan and amend it as necessary in light of changed information and circumstances. The statutory intervals are within 20 working days of placement, then within 3 months and 6 monthly thereafter, but reviews may be rescheduled or held inside these intervals if there are significant changes to the child's care plan.

PERFORMANCE ANALYSIS

100.0% of Children in Care (CiC) are allocated to a qualified social worker.

All reviews, except for 1, have been completed within required timescales during Q3 2020/21.

		CSC 227	CSC 218
		% Children in Care allocated to a qualified Social Worker	% of Children in Care whose reviews had been completed within required timescales (as at month end)
IN MONTH PERFORMANCE	Target	100	100
	Apr-20	100.0	100.0
	May-20	100.0	100.0
	Jun-20	100.0	100.0
	Jul-20	100.0	98.7
	Aug-20	100.0	99.6
	Sep-20	100.0	100.0
	Oct-20	100.0	99.6
	Nov-20	100.0	99.6
	Dec-20	100.0	99.6
	Jan-21		
	Feb-21		
	Mar-21		
ANNUAL TREND	2017/18	100.0	100.0
	2018/19	100.0	100.0
	2019/20	100.0	100.0
	2020/21	100.0	99.6



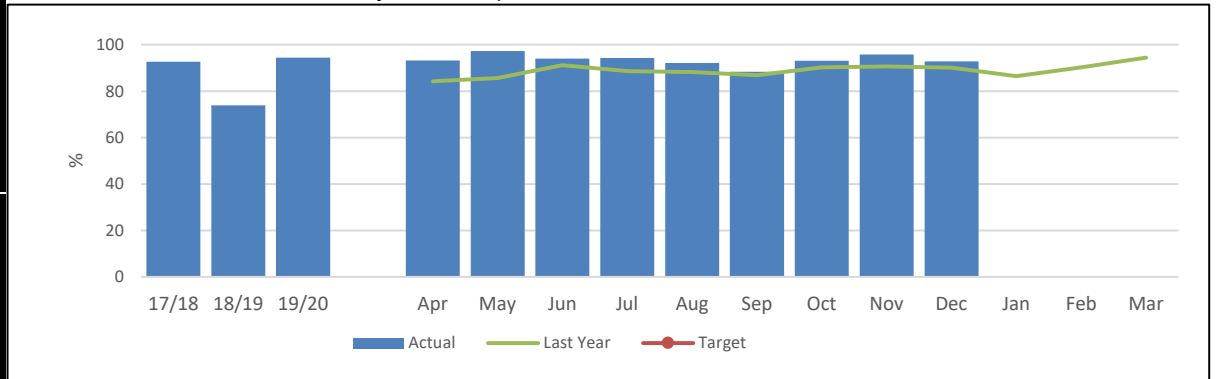
CHILDREN IN CARE - STATUTORY VISITS

DEFINITION	Percentage of Children in Care who had all statutory visits completed within required timescales and percentage of Children in Care's statutory visits completed within timescales each month and year to date.
-------------------	---

PERFORMANCE ANALYSIS	During Q3 2020/21, 93.9% of statutory visits for Children in Care (CiC) were completed in timescale, this is an improvement compared to Q3 2019/20 when there were 89.7% visits completed in timescale.
-----------------------------	---

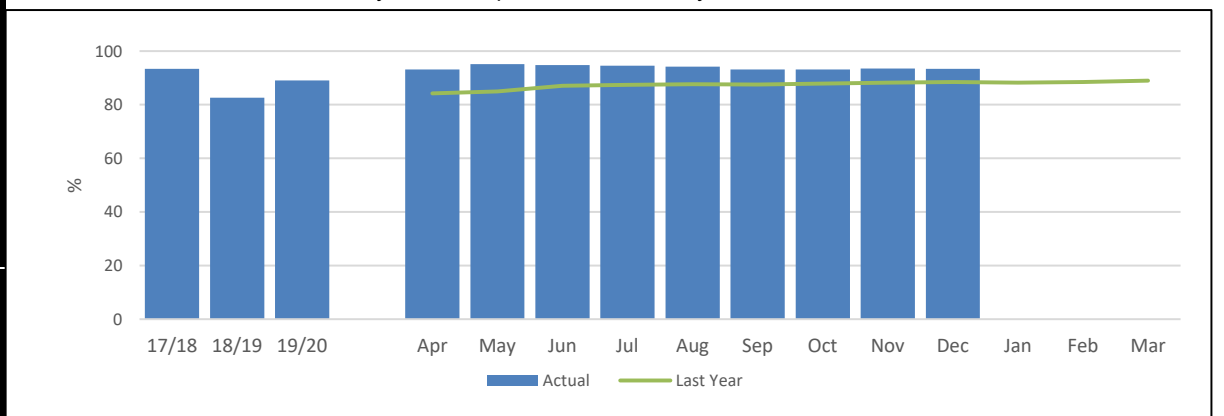
CSC 260a	CSC 260b
% Child in Care statutory visits completed in timescale within the month	% Child in Care statutory visits completed in timescale year to date

CSC 260a: % Child in Care statutory visits completed in timescale within the month



IN MONTH PERFORMANCE	Target	90	90
	Apr-20	93.1	93.1
	May-20	97.3	95.1
	Jun-20	94.0	94.7
	Jul-20	94.3	94.6
	Aug-20	92.2	94.2
	Sep-20	88.4	93.2
	Oct-20	93.1	93.2
	Nov-20	95.8	93.5
	Dec-20	92.8	93.4
	Jan-21		
	Feb-21		
Mar-21			

CSC 260b: % Child in Care statutory visits completed in timescale year to date



ANNUAL TREND	2017/18	93.4	93.4
	2018/19	82.6	82.6
	2019/20	89.0	89.0
	2020/21	92.8	93.4

CHILDREN IN CARE - PLACEMENTS

DEFINITION

Of those Children in Care at the point in time (excluding series of short-term placements), the percentage that had 3 or more separate placements in the previous 12 months; who had been in their current placement for 2 or more years. and who were placed more than 20 miles away from their home address.

On the whole stability is associated with better outcomes; placement instability has been highlighted as a key barrier to improving educational outcomes. Proper assessment and an adequate choice of placements to meet the varied needs of different children are essential if appropriate stable placements are to be made. Inappropriate placements often break down and lead to frequent moves. Nevertheless, the circumstances of some individual children will require 3 or more separate placements during a year if they and others are to be kept safe.

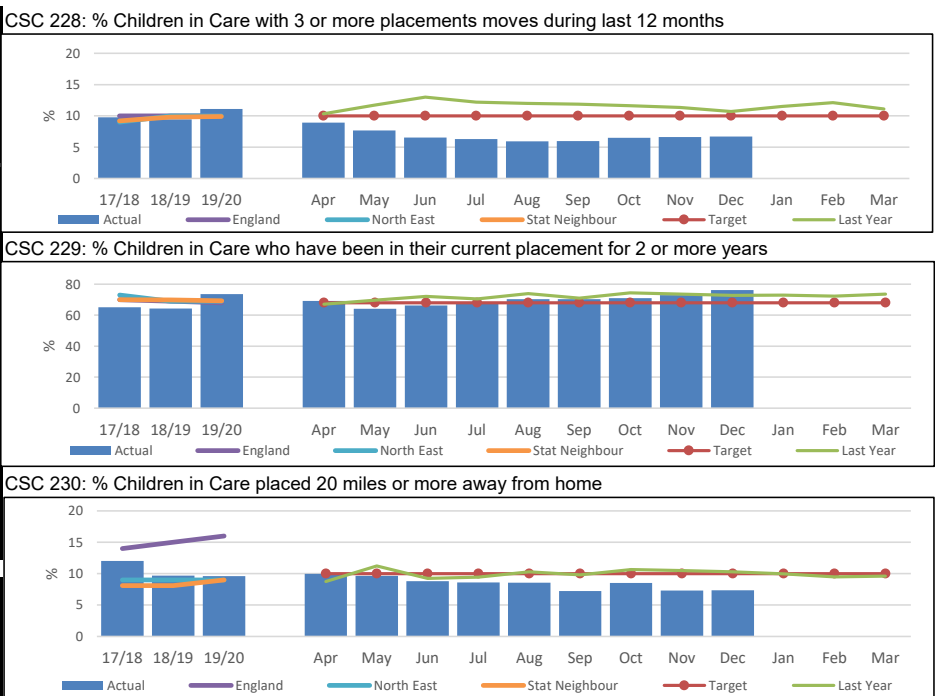
PERFORMANCE ANALYSIS

6.7% of Children in Care, as at December 2020, have had 3 or more placements within the previous 12 months. This is positively below the internal target (10%), national (10), statistical neighbour (9.9) and regional averages (10) as recorded in the LAIT 2020, and below the 10.7% as at December 2019.

Currently, 76.1% of our Children in Care aged under 16 (who have been looked after for at least 2.5 years) have been in their current placement continuously for at least 2 years. This is a higher percentage compared with December 2019 (72.7%) and is positively above the 68% target.

7.4% (20 children) of our Children in Care have been placed 20 or more miles away from home as at December 2020. This is positively below target of 10%.

	CSC 228	CSC 229	CSC 230	
	% Children in Care with 3 or more placements moves during last 12 months	% Children in Care who have been in their current placement for 2 or more years	% Children in Care placed 20 miles or more away from home	
IN MONTH PERFORMANCE	Target	10%	68%	10%
	Apr-20	8.9	69.2	10.0
	May-20	7.7	64.1	9.6
	Jun-20	6.5	66.3	8.8
	Jul-20	6.3	68.1	8.6
	Aug-20	5.9	70.3	8.6
	Sep-20	6.0	70.3	7.2
	Oct-20	6.5	71.0	8.5
	Nov-20	6.6	73.0	7.3
	Dec-20	6.7	76.1	7.4
	Jan-21			
	Feb-21			
	Mar-21			
ANNUAL TREND	2017/18	9.8	65.1	12.0
	2018/19	9.5	64.4	9.7
	2019/20	11.1	73.6	9.6
	2020/21	6.7	76.1	7.4



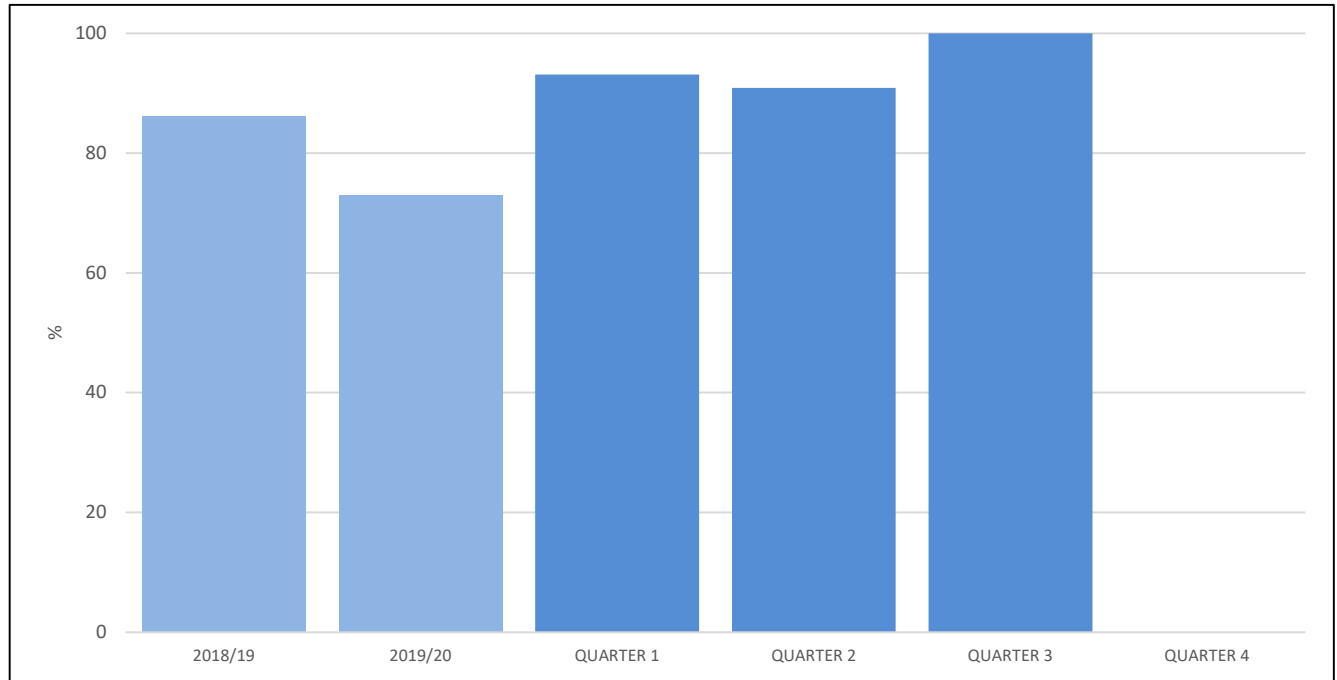
CHILDREN IN CARE - INITIAL HEALTH ASSESSMENTS

DEFINITION	Percentage of Initial Health Assessments completed within 20 working days of a child coming into our care year to date (data from Health), and percentage of IHA forms returned to Health within 7 working days.
-------------------	--

PERFORMANCE ANALYSIS	100.0% of the children, newly into care, were seen by CDDFT within 20 working days for an initial health assessment during Q3 2020/21.
-----------------------------	--

% Newly in to care with a completed Initial Health Assessment within 20 working days (from Health)

% Newly in to care with a completed Initial Health Assessment within 20 working days (from Health)



IN MONTH PERFORMANCE	Target	95
	Apr-20	
	May-20	
	Jun-20	93.1
	Jul-20	
	Aug-20	
	Sep-20	90.9
	Oct-20	
	Nov-20	
	Dec-20	100.0
	Jan-21	
	Feb-21	
	Mar-21	

ANNUAL TREND	2017/18	82.0
	2018/19	86.2
	2019/20	72.9
	2020/21	93.4%

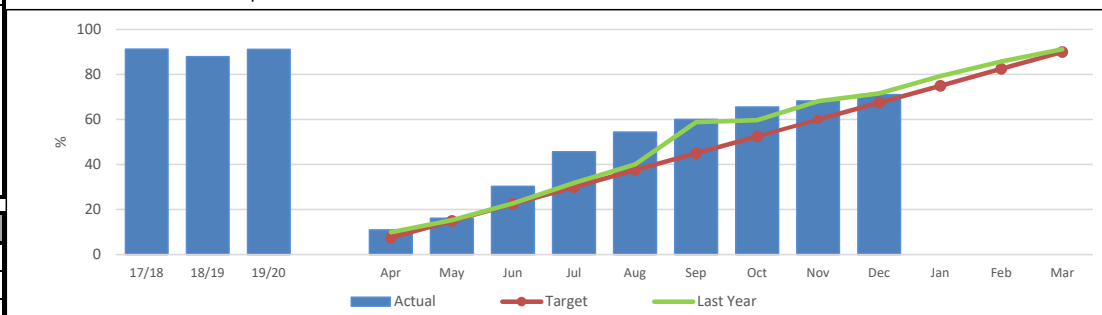
CHILDREN IN CARE - HEALTH ASSESSMENTS

DEFINITION
 Of the Children in Care (CiC) at 31 March who had been in care continuously for at least 12 months, the percentage who have had their Review Health Assessment (RHA) completed and the percentage who have an up to date Health Check.
 Children in Care share many of the same health risks and problems as their peers, but often to a greater degree. These indicators track the participation of our Children in Care's health as a proxy for monitoring the general health and wellbeing of the children, as well as providing a check on the effectiveness of joint working with Health to secure good health outcomes for Children in Care.

PERFORMANCE ANALYSIS
 91.1% of children due a review health assessment by December 2020 have had one completed. This percentage is above December 2019 (90.4%) and is an accomplishment when considering the restraints the pandemic has had on access to health organisations.
 4.5% of the children due a review are refusing to have one completed at this time. Although they are refusing, they are continually reminded of the benefits of having a check-up and encouraged to take part.

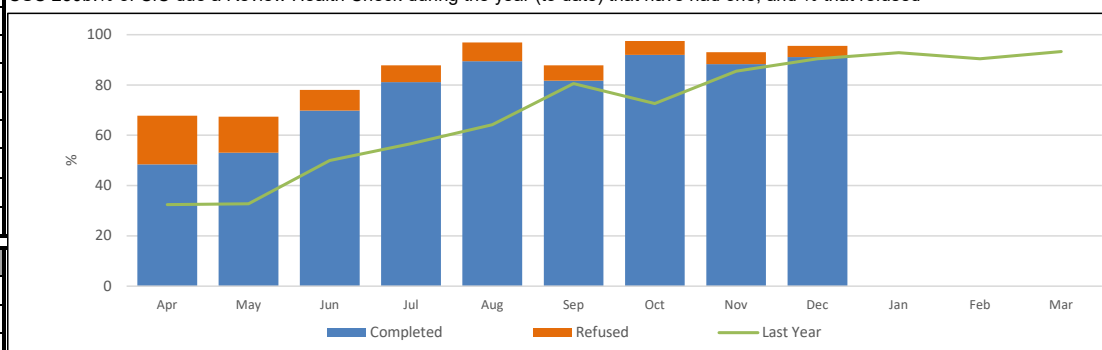
CSC 250		CSC 250b
The % of CiC who have an up to date Health Checks (excludes any who will turn 18 before 31st March)	The % of CiC who were due a Review Health Check (year to date) who refused to engage	The % of Children in Care who were due a Review Health Check year to date and were completed and recorded

CSC 250: % of CiC who are up to date for a Review Health Check at 31st March



IN MONTH PERFORMANCE	Target	90%	90%	
	Apr-20	11.0	19.4	48.4
	May-20	16.1	14.3	53.1
	Jun-20	30.3	8.2	69.9
	Jul-20	45.7	6.7	81.1
	Aug-20	54.4	7.4	89.5
	Sep-20	60.1	6.1	81.7
	Oct-20	65.6	5.6	91.9
	Nov-20	68.2	4.8	88.3
	Dec-20	71.1	4.5	91.1
	Jan-21			
	Feb-21			
Mar-21				

CSC 250b: % of CiC due a Review Health Check during the year (to date) that have had one, and % that refused



ANNUAL TREND	2017/18	91.3		
	2018/19	87.9		87.9
	2019/20	91.2	3.1	93.3
	2020/21	71.1	4.5	91.1

CHILDREN IN CARE - DENTAL HEALTH ASSESSMENTS

DEFINITION

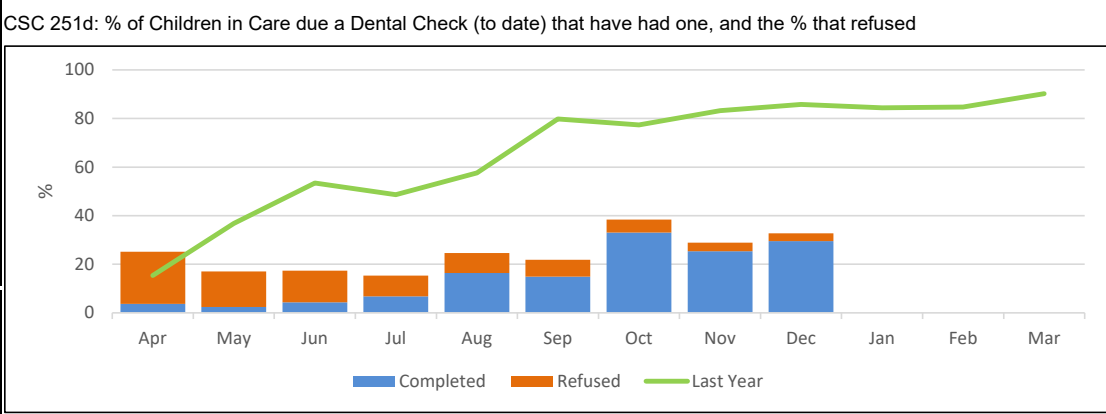
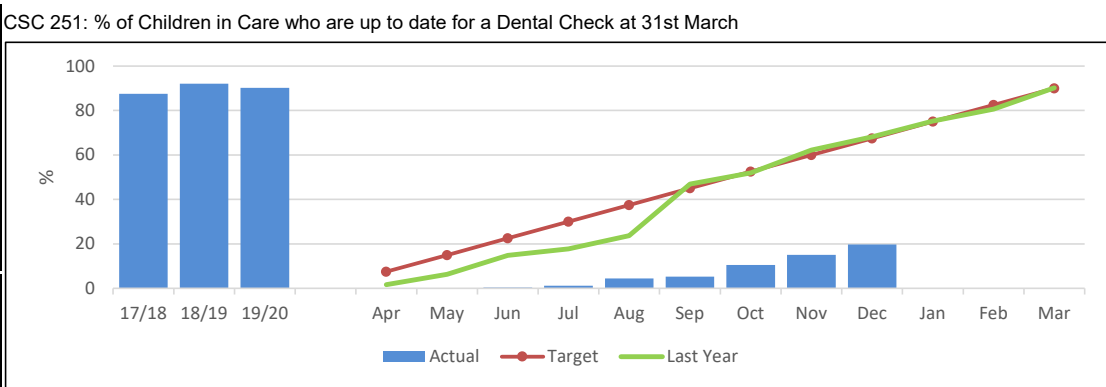
Of the Children in Care (CiC) at 31 March who had been in care continuously for at least 12 months, the percentage who had had their teeth checked by a dentist during the previous 12 months, and the percentage who had had an annual health check during the previous 12 months. Children in Care share many of the same health risks and problems as their peers, but often to a greater degree. These indicators track the participation of our Children in Care with dental checks as a proxy for monitoring the general health and wellbeing of the children, as well as providing a check on the effectiveness of joint working with Health to secure good health outcomes for Children in Care.

PERFORMANCE ANALYSIS

29.5% of children due a dental check assessment by December 2020 have had one completed. This is lower than the 85.8% of CiC who were up to date with their assessments by December 2019, however NHS dental practises have been closed for a considerable length of time during the pandemic and when opened, were only admitting emergency cases.

3.2% of the children due a dental check are refusing to have one completed at this time. Although they are refusing, they are continually reminded of the benefits of having a check-up and encouraged to take part.

	CSC 251		CSC 251d	
	The % of Children in Care with up to date dental checks (excludes any who will turn 18 before 31st March)	The % of Children in Care who were due a dental check (year to date) who refused to engage	The % of Children in Care who were due a dental check year to date and were up to date by the report date	
IN MONTH PERFORMANCE	Target	90%	90%	
	Apr-20	0.0	21.4	3.7
	May-20	0.0	14.6	2.4
	Jun-20	0.4	13.0	4.4
	Jul-20	1.2	8.5	6.8
	Aug-20	4.4	8.2	16.4
	Sep-20	5.2	6.9	14.9
	Oct-20	10.5	5.4	33.0
	Nov-20	15.0	3.5	25.4
	Dec-20	19.7	3.2	29.5
	Jan-21			
	Feb-21			
	Mar-21			
ANNUAL TREND	2017/18	87.5		
	2018/19	92.1		92.1
	2019/20	90.2	3.1	90.2
	2020/21	19.7	3.2	29.5



CARE LEAVERS

DEFINITION

The percentage of 'former relevant' care leavers aged 19-21 who were in suitable accommodation at their most recent contact, and the percentage who were not in employment, education or training at their most recent contact. Published data is included for comparison however data submitted to DfE by Local Authorities captures the young person's status around their 19th, 20th, or 21st birthday each year rather than the latest available information. This measures accommodation and employment outcomes for young people formerly in care - a key group at risk of social exclusion. It is intended to increase the proportion of former care leavers who are in suitable accommodation and employment, education or training.

PERFORMANCE ANALYSIS

98.0% of our care leavers were in suitable accommodation at the end of December 2020. This is above target of 95%. The 2.0% of care leavers in unsuitable accommodation is due to young people being recalled to custody during this quarter.

Of the young people (aged 19-21) as at December 2020 who were Not in Education, Employment or Training (NEET):

- 10.2% NEET because of illness or disability
- 6.1% NEET because of other circumstances
- 10.2% NEET because of pregnancy or parenting.

This equates to 26.5% of our care leavers which is below internal target of 30% NEET.

	CSC 286	CSC 294	
	% Care Leavers in suitable accommodation	% Care Leavers NEET	
IN MONTH PERFORMANCE	Target	95%	30%
	Apr-20	100.0	31.7
	May-20	100.0	31.8
	Jun-20	100.0	29.6
	Jul-20	100.0	28.9
	Aug-20	100.0	25.5
	Sep-20	100.0	25.0
	Oct-20	100.0	26.5
	Nov-20	95.9	24.5
	Dec-20	98.0	26.5
	Jan-21		
	Feb-21		
	Mar-21		
ANNUAL TREND	2017/19	94.9	32.2
	2018/19	96.4	25.0
	2019/20	98.2	28.1
	2020/21	98.0	26.5

